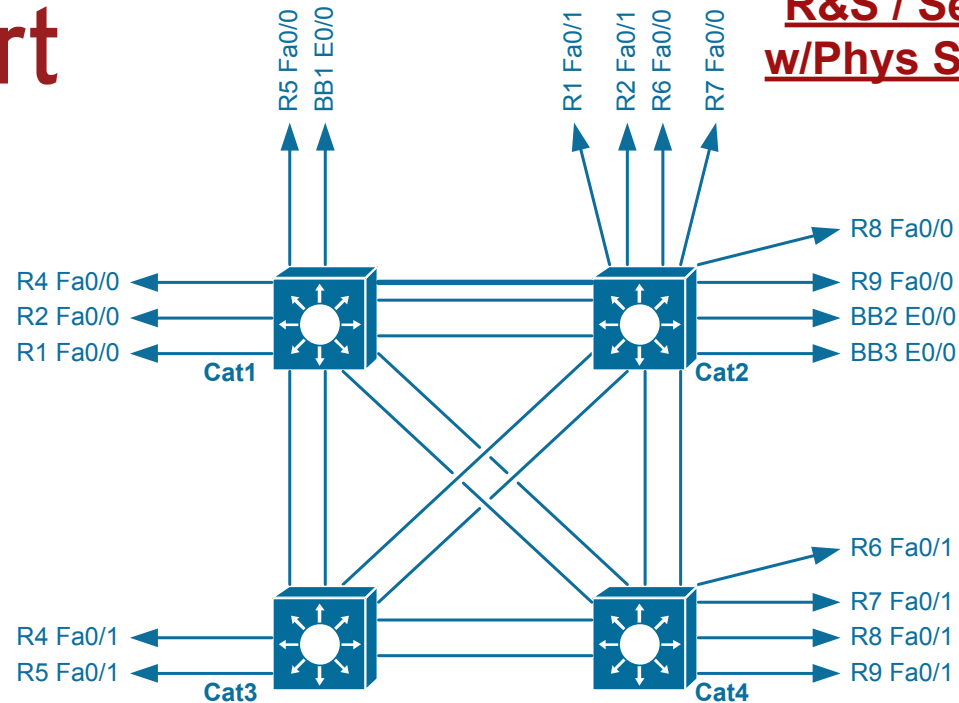


**R&S / Service Provider GNS3
w/Phys SW Base Connectivity**



Catalyst Host Connectivity Tables

Cat1

Fa0/1	R1 Fa0/0
Fa0/2	R2 Fa0/0
Fa0/4	R4 Fa0/0
Fa0/5	R5 Fa0/0
Fa0/11	BB1 E0/0
Fa0/19	Cat4 Fa0/9
Fa0/20	Cat4 Fa0/20
Fa0/21	Cat3 Fa0/21
Fa0/22	Cat3 Fa0/22
Fa0/23	Cat2 Fa0/23
Fa0/24	Cat2 Fa0/24
Gi0/1	Cat2 Gi0/1

Cat2

Fa0/1	R1 Fa0/1
Fa0/2	R2 Fa0/1
Fa0/6	R6 Fa0/0
Fa0/7	R7 Fa0/0
Fa0/8	R8 Fa0/0
Fa0/9	R9 Fa0/0
Fa0/12	BB2 E0/0
Fa0/13	BB3 E0/0
Fa0/19	Cat3 Fa0/19
Fa0/20	Cat3 Fa0/20
Fa0/21	Cat4 Fa0/21
Fa0/22	Cat4 Fa0/22
Fa0/23	Cat1 Fa0/23
Fa0/24	Cat1 Fa0/24
Gi0/1	Cat1 Gi0/1

Cat3

Fa0/4	R4 Fa0/1
Fa0/5	R5 Fa0/1
Fa0/19	Cat2 Fa0/19
Fa0/20	Cat2 Fa0/20
Fa0/21	Cat1 Fa0/21
Fa0/22	Cat1 Fa0/22
Fa0/23	Cat4 Fa0/23
Fa0/24	Cat4 Fa0/24

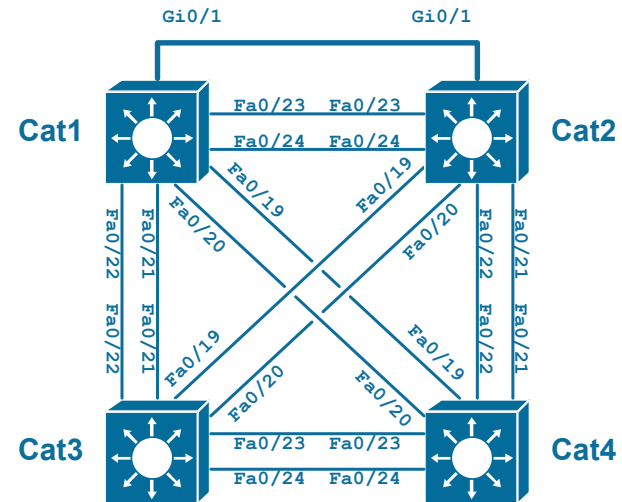
Cat4

Fa0/6	R6 Fa0/1
Fa0/7	R7 Fa0/1
Fa0/8	R8 Fa0/1
Fa0/9	R9 Fa0/1
Fa0/19	Cat1 Fa0/19
Fa0/20	Cat1 Fa0/20
Fa0/21	Cat2 Fa0/21
Fa0/22	Cat2 Fa0/22
Fa0/23	Cat3 Fa0/23
Fa0/24	Cat3 Fa0/24

B2B Serial Connections Between Routers

R2 Se2/0	R5 Se2/0
R5 Se2/0	R2 Se2/0
R6 Se2/0	R9 Se2/0
R6 Se2/1	R9 Se2/1
R7 Se0/0	R8 Se0/0
R8 Se0/0	R7 Se0/0
R9 Se2/0	R6 Se2/0
R9 Se2/1	R6 Se2/1

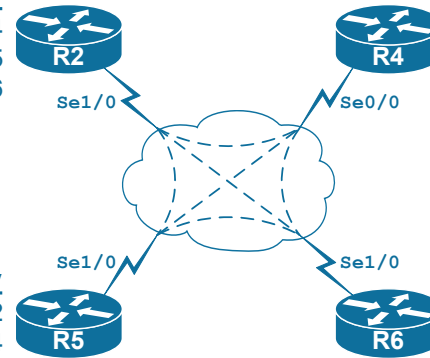
Catalyst Trunk Interconnects



Frame-Relay DLCI Mapping

R2 Frame Relay

to R4: 204, 214, 224
to R5: 205, 215, 225
to R6: 206, 216, 226



R4 Frame Relay

to R2: 402, 412, 422
to R5: 405, 415, 425
to R6: 406, 416, 426

R5 Frame Relay

to R2: 502, 512, 522
to R4: 504, 514, 524
to R6: 506, 516, 526

R6 Frame Relay

to R2: 602, 612, 622
to R4: 604, 614, 624
to R5: 605, 615, 625

R&S / Service Provider GNS3 to Physical SW Connections Table

